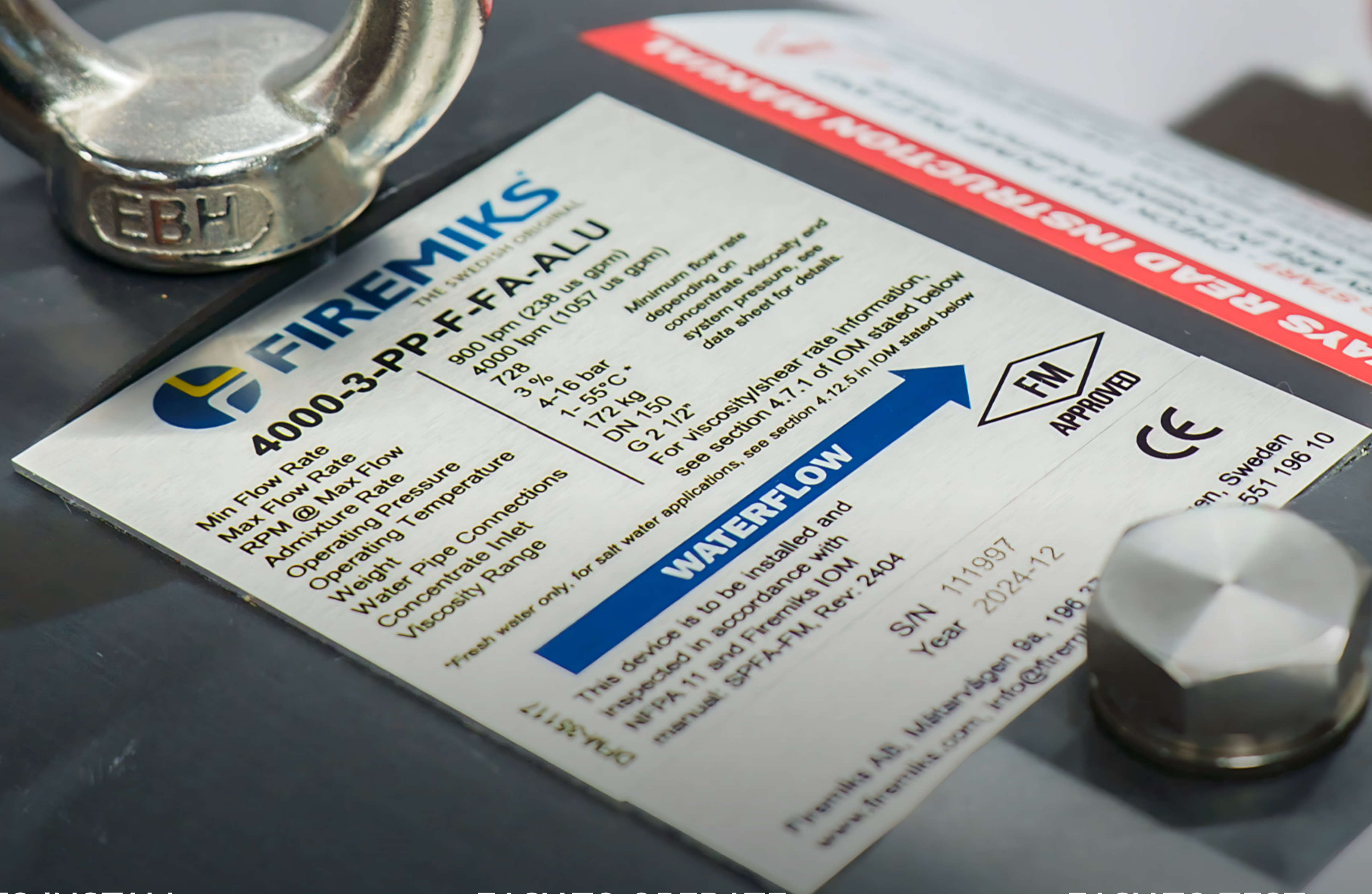


FM-APPROVED WATER DRIVEN VOLUMETRIC PUMP PROPORTIONERS



VARIABLE VISCOSITY PUMP PROPORTIONERS



EASY TO INSTALL

COMPACT DOSING SYSTEM WITH NO NEED FOR PRESSURE TANK OR ADDITIONAL ENERGY SUPPLY

Straightforward installation and commissioning with factory calibrated units. Suitable for a wide viscosity range and easy to retrofit in existing system, simply connect to a refillable atmospheric tank.

EASY TO OPERATE

RELIABLE MECHANICAL PROPORTIONER APPROVED TOWARDS THE RIGOROUS FM 5130 STANDARD

Instantly activated as soon as water flow starts with constant and accurate proportioning within approved tolerances. No pressure balancing is required.

EASY TO TEST

COST EFFECTIVE AND LOWER ENVIRONMENTAL IMPACT

Test the dosing rate with the optional Dosing/Return valve (DRV) and independent flow meters. No release of foam to the environment as the concentrate is pumped back to the tank, providing significant cost savings. In addition, no dispersed foam to clean up and dispose of.

FM-APPROVED LINE OF FIREMIKS



FIREMIKS OFFERS 18 FM-APPROVED MODELS IN SEVEN FLOW SIZES

The following models are FM-approved towards standard FM 5130 (May 2021) Approval identification: PR470904

Size (lpm)	ALU	BRZ	ALU-SS	BRZ-SS	Water motor connection
450	450-3-PP-F-FA-ALU	450-3-PP-F-FA-BRZ			2" DN 50
800	800-3-PP-F-FA-ALU	800-3-PP-F-FA-BRZ	800-3-PP-F-FA-ALU-SS	800-3-PP-F-FA-BRZ-SS	2,5" DN 65
1800	1800-3-PP-F-FA-ALU	1800-3-PP-F-FA-BRZ	1800-3-PP-F-FA-ALU-SS	1800-3-PP-F-FA-BRZ-SS	4" DN 100
2400	2400-3-PP-F-FA-ALU	2400-3-PP-F-FA-BRZ			4" DN 100
4000	4000-3-PP-F-FA-ALU	4000-3-PP-F-FA-BRZ			6" DN 150
6000	6000-3-PP-F-FA-ALU	6000-3-PP-F-FA-BRZ			8" DN 200
8000	8000-3-PP-F-FA-ALU	8000-3-PP-F-FA-BRZ			8" DN 200

ALU: Hard-anodized and PTFE-coated aluminum water motor
 BRZ: Nickel-aluminum bronze water motor, suitable for marine/offshore use.
 SS: with option SS 316 L Pump head

SUITABLE FOR A WIDE RANGE OF VISCOSITIES INCL. THE NEW FLUOR-FREE (SFFF) CONCENTRATES.

FIREMIKS water-driven volumetric pump proportioners are recognized by FM as Variable Viscosity Pump Proportioners. All our FM-approved models ensure accurate dosing and can handle concentrates ranging from 1 cP (Newtonian) up to 7288 cP (non-Newtonian). This makes them ideal for fluorine-free concentrates (SFFF) with viscosities below or in alignment with this shear rate curve.

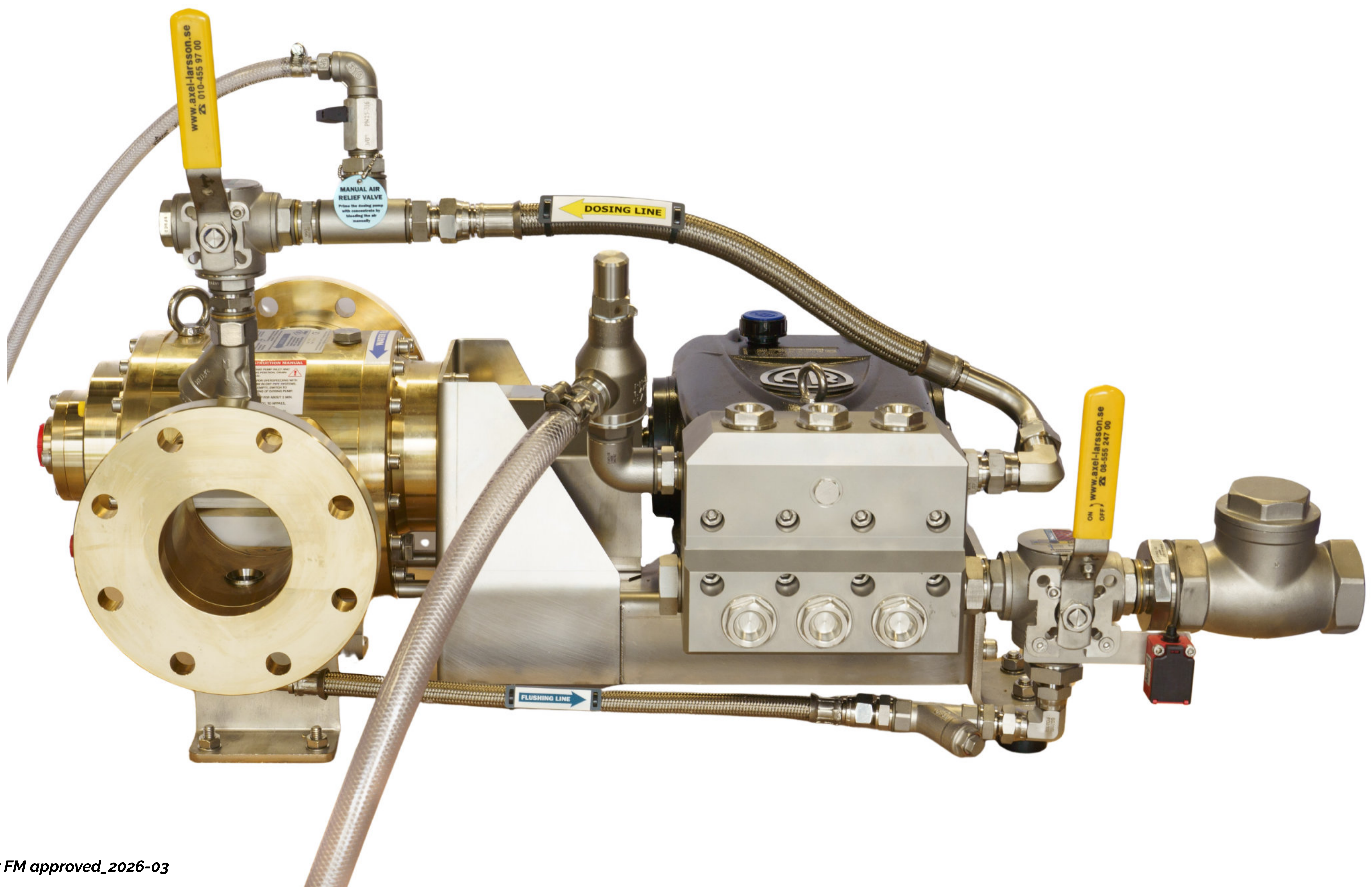
FIREMIKS FM-approved shear rate curve for concentrates:

Shear rate (1/s)	Viscosity (cP)		
	450 & 800	1800, 2400 & 4000	6000 & 8000
5	3934	6422	7288
10	2141	3545	3942
20	1157	1945	2110
50	529	882	959
100	302	497	533
600	80	128	132

For technical details consult the Data sheets for each FM-approved model.
 For information on our FM approval, go to www.approvalguide.com

PARALLEL INSTALLATIONS FOR LARGER FLOWS

To achieve higher flows, such as 12000 lpm or 16 000 lpm, we offer two 6000-3-PP-F-FA units or two FIREMIKS 8000-3-PP-FA units installed in parallel, either on a base skid or as "double-decker" configurations.



FIREMIKS Flyer FM approved_2026-03