

## RECOMMENDED PRINCIPLE SETUP - FIREMIKS® FIXED TYPE (AUTOMATIC FLUSHING)

The purpose of this recommended principle setup scheme is to inform on the general needs for making a good installation with the FIREMIKS and is not binding or contractual in any way. For information about each specific FIREMIKS model, working conditions, connection types, etc. please consult the respective data sheets. We reserve the right to make changes in this information without prior notice.

### FIREMIKS (with DRV)

- |   |  |
|---|--|
| 1. Water motor  | 14. Shut off valves  |
| 2. Dosing pump  | 15. Pipe supports  |
| 3. Drive coupling                                       | 16. Connections to Water motor   |
| 4. Selector valve:<br>Dosing/Flushing                   | 17. Connection to Concentrate inlet  |
| 5. Air relief valve (manual or automatic)               | 18. Swing check valve, to prevent<br>flushing water to enter the<br>Concentrate tank, (do not use a check<br>valve that is spring loaded, as it<br>restricts the concentrate flow) |
| 6. Check valve  | 19. Optional; Selector Valve   |
| 7. Filter   | Suction pipe/ Concentrate container  |
| 8. Drain valve  | 20. Nozzles - Monitors - Deluge system<br>- Sprinkler heads - Foam generators, etc.  |
| 9. Pressure relief valve (only on DRV)                  | 21. Internal diameter on suction system must<br>have equal or larger diameter as the inlet of<br>the Selector valve Dosing/Flushing (pos no 4.)                                    |
| 10. Main water pump                                     |  |
| 11. (Length does not affect dosing<br>rate of FIREMIKS) |  |
| 12. Y-strainer, main water line                         |  |
| 13. Optional: Flow meter                                |  |

### 22. Dosing/Return Valve (DRV)

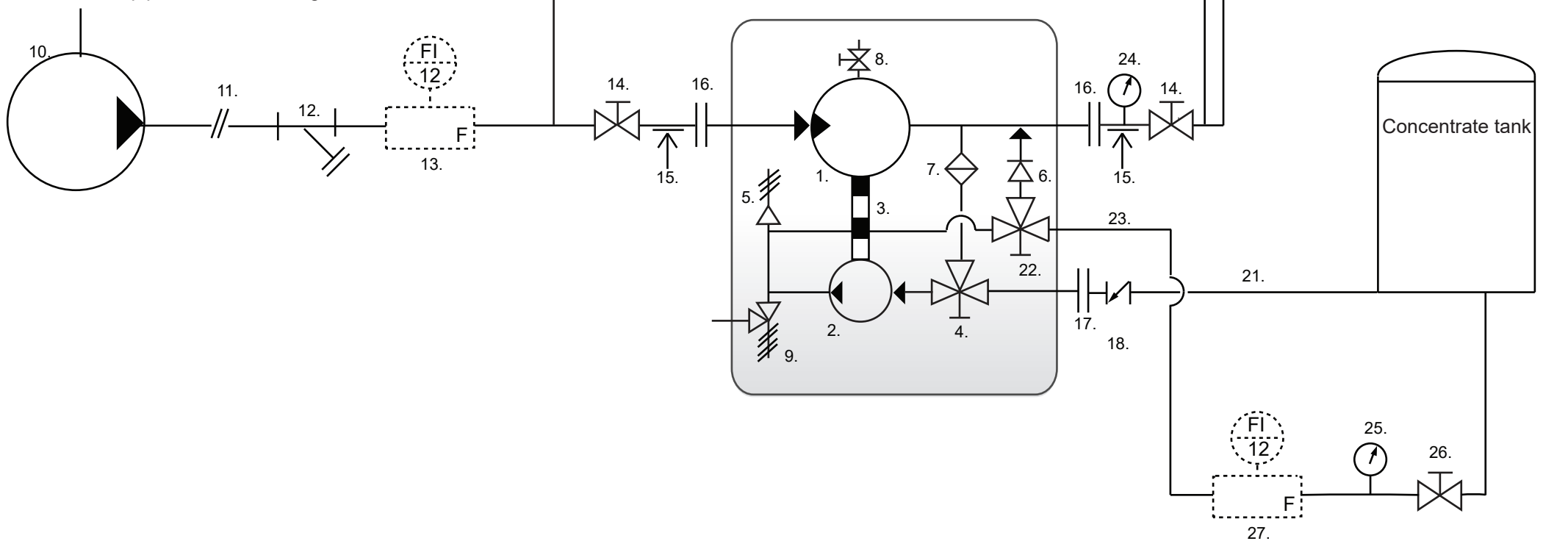
Parts for testing with DRV:

- |   |
|---|
| 23. Return line to tank (temporary or permanent)                |
| 24. Pressure gauge  |
| 25. Pressure gauge dampened                                     |
| 26. Manual valve to create pressure (p25=p24)                   |
| 27. Flow meter (or other means to determine<br>volume per time) |

*Warning: consult instruction manual for safe testing procedures using the DRV valve!*

*We recommend gravity-feed of concentrate from tank to dosing pump. (Obligatory for piston pump -PP types).*

Main water supply. NOTE! Only clean water is allowed.  
Flush well the pipes before installing the FIREMIKS-unit.



### Firemiks AB

P.O.Box 8155

SE 104 20 STOCKHOLM, Sweden

+46-8-551 196 10

info@firemiks.com - www.firemiks.com

2018-02